



CIBC U.S. Dollar Money Market Fund

Annual Management Report of Fund Performance

for the financial year ended December 31, 2015

All figures are reported in U.S. dollars unless otherwise noted.

This annual management report of fund performance contains financial highlights but does not contain the complete annual financial statements of the investment fund. If you have not received a copy of the annual financial statements with this annual management report of fund performance, you can get a copy of the annual financial statements at your request, and at no cost, by calling us toll-free at 1-800-465-3863, by writing to us at CIBC, 18 York Street, Suite 1300, Toronto, Ontario, M5J 2T8, or by visiting www.cibc.com/mutualfunds or the SEDAR website at www.sedar.com.

Unitholders may also contact us using one of these methods to request a copy of the investment fund's proxy voting policies and procedures, proxy voting disclosure record, or quarterly portfolio disclosure.

Management Discussion of Fund Performance

Investment Objective and Strategies

Investment Objective: CIBC U.S. Dollar Money Market Fund (the *Fund*) seeks to maximize income while attempting to preserve capital and maintain liquidity by investing primarily in highly liquid, low risk U.S. and Canadian money market instruments denominated in U.S. dollars.

Investment Strategies: The term-to-maturity of the Fund is adjusted to reflect the portfolio advisor's outlook for interest rates and the allocation of assets by credit quality is adjusted to reflect the attractiveness of non-Government of Canada treasury bills versus Government of Canada treasury bills. Adjustments to the portfolio are based on a review of macroeconomic and capital market conditions both inside and outside of North America.

Risk

The Fund is a conservative U.S. money market fund that is suitable for very short-term investors who can tolerate low investment risk.

For the period ended December 31, 2015, the Fund's overall level of risk remains as discussed in the simplified prospectus.

Results of Operations

The portfolio advisor of the Fund is CIBC Asset Management Inc. (*CAMI* or the *Portfolio Advisor*). The commentary that follows provides a summary of the results of operations for the period ended December 31, 2015. All dollar figures are expressed in thousands, unless otherwise indicated.

The Fund's net asset value decreased by 24% during the period, from \$253,039 as at December 31, 2014 to \$191,850 as at December 31, 2015. Net redemptions of \$61,586 were partially offset by positive investment performance, resulting in an overall decrease in net asset value.

The U.S. Federal Reserve Board (the *Fed*) increased its target federal funds rate to 0.25%–0.50% in December, the first interest rate increase in nearly a decade. The move was widely expected and signalled the Fed's confidence in the U.S. economy. Unemployment fell to 5%, its lowest level since April 2008, from a peak of 10% in

October 2009. The Fed indicated it would continue to take a cautious approach to raising interest rates, suggesting gradual adjustments. In determining the path for future rate increases, the Fed said it will monitor the continued improvement in the employment market and will need to be fairly certain that inflation will return to its 2.0% target over the medium term. The Fed also revised its growth forecast for 2016 to 2.4%, up from 2.3%.

The Fund maintains a higher weighting in corporate bonds to maximize the Fund's yield (income return) in a low interest rate environment. With U.S. treasury-bill yields close to zero, holdings in asset-backed commercial paper and other commercial paper provided some yield enhancement for the Fund.

In a flat yield curve environment, the Portfolio Advisor believes there is limited opportunity to add value to the Fund's performance.

Recent Developments

During the period, there were no events or activities that had a material impact on the Fund.

Related Party Transactions

Canadian Imperial Bank of Commerce (CIBC) and its affiliates have the following roles and responsibilities with respect to the Fund, and receive the fees described below in connection with their roles and responsibilities.

Manager

CIBC is the Manager of the Fund. CIBC receives management fees with respect to the day-to-day business and operations of the Fund, calculated based on the net asset value of each respective class of units of the Fund as described in the section entitled *Management Fees*. The Manager also compensates its wholesalers in connection with their marketing activities regarding the Fund. From time to time, CIBC may provide seed capital to the Fund.

Trustee

CIBC Trust Corporation, a wholly-owned subsidiary of CIBC, is the trustee (the *Trustee*) of the Fund. The Trustee holds title to the property (cash and securities) of the Fund on behalf of its unitholders.

Portfolio Advisor

The portfolio advisor provides, or arranges to provide, investment advice and portfolio management services to the Fund. CAMI, a wholly-owned subsidiary of CIBC, is the portfolio advisor of the Fund.

Distributor

Dealers and other firms sell the units of the Fund to investors. These dealers and other firms include CIBC's related dealers such as the principal distributor, CIBC Securities Inc. (*CIBC SI*), the CIBC Investor's Edge discount brokerage division of CIBC Investor Services Inc. (*CIBC ISI*), the CIBC Imperial Service division of CIBC ISI, and the CIBC Wood Gundy division of CIBC World Markets Inc. (*CIBC WM*). CIBC SI, CIBC ISI, and CIBC WM are wholly-owned subsidiaries of CIBC.

CIBC may pay trailing commissions to these dealers and firms in connection with the sale of units of the Fund. These dealers and other firms may pay a portion of these trailing commissions to their advisors who sell units of the Fund to investors.

Brokerage Arrangements and Soft Dollars

The Portfolio Advisor makes decisions, including the selection of markets and dealers and the negotiation of commissions, with respect to the purchase and sale of portfolio securities, certain derivative products (including futures) and the execution of portfolio transactions. Brokerage business may be allocated by the Portfolio Advisor to CIBC WM and CIBC World Markets Corp., each a subsidiary of CIBC. CIBC WM and CIBC World Markets Corp. may also earn spreads on the sale of fixed income securities and other securities and certain derivative products (including forwards) to the Fund. A spread is the difference between the bid and ask prices for a security in the applicable marketplace, with respect to the execution of portfolio transactions. The spread will differ based upon various factors such as the type and liquidity of the security.

Dealers, including CIBC WM and CIBC World Markets Corp., may furnish goods and services, other than order execution, to the Portfolio Advisor in partial exchange for processing trades through them (referred to in the industry as "soft dollar" arrangements). These goods and services are paid for with a portion of the brokerage commissions and assist the Portfolio Advisor with investment decision-making services for the Fund or relate directly to the execution of portfolio transactions on behalf of the Fund.

In addition, CIBC may enter into commission recapture arrangements with certain dealers with respect to the Fund. Any commission recaptured will be paid to the Fund.

During the period, the Fund did not pay any brokerage commissions or other fees to CIBC WM or CIBC World Markets Corp. Spreads associated with fixed income and other securities are not

ascertainable and, for that reason, cannot be included when determining these amounts.

Fund Transactions

The Fund may enter into one or more of the following transactions (the *Related Party Transactions*) in reliance on the standing instructions issued by the Independent Review Committee (*IRC*):

- invest in or hold equity securities of CIBC or issuers related to a portfolio sub-advisor;
- invest in or hold non-exchange-traded debt securities of CIBC or an issuer related to CIBC in a primary offering and in the secondary market;
- make an investment in the securities of an issuer for which CIBC WM, CIBC World Markets Corp., or any affiliate of CIBC (a *Related Dealer*) acts as an underwriter during the offering of the securities at any time during the 60-day period following the completion of the offering of such securities (in the case of a "private placement" offering, in accordance with the exemptive relief order granted by the Canadian securities regulatory authorities and in accordance with the policies and procedures relating to such investment);
- purchase equity or debt securities from or sell them to a Related Dealer, where it is acting as principal;
- undertake currency and currency derivative transactions where a Related Dealer is the counterparty; and
- purchase securities from or sell securities to another investment fund or a managed account managed by the Manager or an affiliate of the Manager.

At least annually, the IRC reviews the Related Party Transactions for which they have issued standing instructions. The IRC is required to advise the Canadian securities regulatory authorities if it determines that an investment decision was not made in accordance with conditions of its approval.

Custodian

CIBC Mellon Trust Company is the custodian of the Fund (the *Custodian*). The Custodian holds all cash and securities for the Fund and ensures that those assets are kept separate from any other cash or securities that the Custodian might be holding. The Custodian also provides other services to the Fund including record-keeping and processing of foreign exchange transactions. The Custodian may hire sub-custodians for the Fund. The fees and spreads for services of the Custodian directly related to the execution of portfolio transactions by the Fund are paid by CAMI and/or dealer(s) directed by CAMI, up to the amount of the credits generated under soft dollar arrangements from trading on behalf of the Fund during that month. All other fees and spreads for the services of the Custodian are paid by the Manager and charged to the Fund on a recoverable basis. CIBC owns a 50% interest in the Custodian.

Service Provider

CIBC Mellon Global Securities Services Company (*CIBC GSS*) provides certain services to the Fund, including securities lending, fund accounting and reporting, and portfolio valuation. Such servicing fees are paid by the Manager and charged to the Fund on a recoverable basis. CIBC indirectly owns a 50% interest in CIBC GSS.

CIBC U.S. Dollar Money Market Fund

Financial Highlights

The following tables show selected key financial information about the Fund and are intended to help you understand the Fund's financial performance for the period ended December 31.

The Fund's Net Assets per Unit¹ (in US\$) - Class A Units

	2015	2014	2013	2012	2011
Net Assets, beginning of period	\$ 10.00	\$ 10.00	\$ 10.00	\$ 10.00	\$ 10.00
Increase (decrease) from operations:					
Total revenue	\$ 0.03	\$ 0.03	\$ 0.03	\$ 0.03	\$ 0.03
Total expenses	(0.02)	(0.02)	(0.02)	(0.01)	(0.02)
Realized gains (losses) for the period	—	—	—	—	—
Unrealized gains (losses) for the period	—	—	—	—	—
Total increase (decrease) from operations²	\$ 0.01	\$ 0.01	\$ 0.01	\$ 0.02	\$ 0.01
Distributions:					
From income (excluding dividends)	\$ 0.01	\$ 0.01	\$ 0.01	\$ 0.01	\$ 0.01
From dividends	—	—	—	—	—
From capital gains	—	—	—	—	—
Return of capital	—	—	—	—	—
Total Distributions³	\$ 0.01	\$ 0.01	\$ 0.01	\$ 0.01	\$ 0.01
Net Assets, end of period	\$ 10.00	\$ 10.00	\$ 10.00	\$ 10.00	\$ 10.00

¹ This information is derived from the Fund's audited annual financial statements. The Fund adopted International Financial Reporting Standards (*IFRS*) on January 1, 2014. Previously, the Fund prepared its financial statements in accordance with Canadian Generally Accepted Accounting Principles (*GAAP*) as defined in Part V of the CPA Canada Handbook. Under Canadian GAAP, the Fund measured fair values of its investments in accordance with CICA Handbook Section 3855 which required the use of bid prices for long positions and ask prices for short positions. As such, the net assets per unit figure presented in the financial statements may differ from the net asset value calculated for fund pricing purposes. An explanation of these differences can be found in the notes to the financial statements issued prior to January 1, 2014. Upon adoption of IFRS, the Fund measures the fair value of its investments by using the close market prices, where the close market price falls within the bid-ask spread. As such, the Fund's accounting policies for measuring the fair value of investments in the financial statements are consistent with those used in measuring the net asset value for transactions with unitholders. Accordingly, the opening net asset figure as at January 1, 2013 was restated to reflect accounting policy adjustments made in accordance with IFRS. All figures presented for periods prior to January 1, 2013 were prepared in accordance with Canadian GAAP and subsequent thereto were prepared in accordance with IFRS.

² Net assets and distributions are based on the actual number of units outstanding at the relevant time. The total increase (decrease) from operations is based on the weighted average number of units outstanding during the period.

³ Distributions were paid in cash, reinvested in additional units of the Fund, or both.

Ratios and Supplemental Data - Class A Units

	2015	2014	2013	2012	2011
Total Net Asset Value (000s)⁴	\$ 93,786	\$ 112,561	\$ 135,360	\$ 157,478	\$ 183,579
Number of Units Outstanding⁴	9,378,615	11,256,040	13,535,972	15,747,763	18,357,879
Management Expense Ratio⁵	0.20%	0.20%	0.20%	0.15%	0.16%
Management Expense Ratio before waivers or absorptions⁵	1.24%	1.29%	1.28%	1.27%	1.26%
Trading Expense Ratio⁷	0.00%	0.00%	0.00%	0.00%	0.00%
Portfolio Turnover Rate⁸	n/a	n/a	n/a	n/a	n/a
Net Asset Value per Unit	\$ 10.00	\$ 10.00	\$ 10.00	\$ 10.00	\$ 10.00

⁴ This information is presented as at December 31 of the period(s) shown.

⁵ Management expense ratio is based on the total expenses of the fund (excluding commissions and other portfolio transaction costs), incurred by or allocated to a class of units for the period shown, expressed as an annualized percentage of the daily average net asset value of that class during the period.

⁶ The decision to waive and/or absorb management fees and operating expenses is at the discretion of the Manager. The practice of waiving and/or absorbing management fees and operating expenses may continue indefinitely or may be terminated at any time without notice to unitholders.

⁷ The trading expense ratio represents total commissions and other portfolio transaction costs before income taxes expressed as an annualized percentage of the daily average net asset value during the period. Spreads associated with fixed income securities trading are not ascertainable and, for that reason, are not included in the trading expense ratio calculation.

⁸ The portfolio turnover rate indicates how actively the portfolio advisor and/or portfolio sub-advisor manages the portfolio investments. A portfolio turnover rate of 100% is equivalent to a fund buying and selling all of the securities in its portfolio once in the course of the period. The higher a portfolio turnover rate in a period, the greater the trading costs payable by a fund in the period, and the greater the chance of an investor receiving taxable capital gains in the year. There is not necessarily a relationship between a high turnover rate and the performance of a fund.

CIBC U.S. Dollar Money Market Fund

The Fund's Net Assets per Unit¹ (in US\$) - Premium Class Units

	2015	2014	2013	2012	2011
Net Assets, beginning of period	\$ 10.00	\$ 10.00	\$ 10.00	\$ 10.00	\$ 10.00
Increase (decrease) from operations:					
Total revenue	\$ 0.03	\$ 0.03	\$ 0.03	\$ 0.03	\$ 0.02
Total expenses	(0.01)	(0.01)	(0.01)	(0.01)	(0.01)
Realized gains (losses) for the period	—	—	—	—	—
Unrealized gains (losses) for the period	—	—	—	—	—
Total increase (decrease) from operations²	\$ 0.02	\$ 0.02	\$ 0.02	\$ 0.02	\$ 0.01
Distributions:					
From income (excluding dividends)	\$ 0.02	\$ 0.01	\$ 0.01	\$ 0.01	\$ 0.01
From dividends	—	—	—	—	—
From capital gains	—	—	—	—	—
Return of capital	—	—	—	—	—
Total Distributions³	\$ 0.02	\$ 0.01	\$ 0.01	\$ 0.01	\$ 0.01
Net Assets, end of period	\$ 10.00	\$ 10.00	\$ 10.00	\$ 10.00	\$ 10.00

¹ This information is derived from the Fund's audited annual financial statements. The Fund adopted International Financial Reporting Standards (*IFRS*) on January 1, 2014. Previously, the Fund prepared its financial statements in accordance with Canadian Generally Accepted Accounting Principles (*GAAP*) as defined in Part V of the CPA Canada Handbook. Under Canadian GAAP, the Fund measured fair values of its investments in accordance with CICA Handbook Section 3855 which required the use of bid prices for long positions and ask prices for short positions. As such, the net assets per unit figure presented in the financial statements may differ from the net asset value calculated for fund pricing purposes. An explanation of these differences can be found in the notes to the financial statements issued prior to January 1, 2014. Upon adoption of IFRS, the Fund measures the fair value of its investments by using the close market prices, where the close market price falls within the bid-ask spread. As such, the Fund's accounting policies for measuring the fair value of investments in the financial statements are consistent with those used in measuring the net asset value for transactions with unitholders. Accordingly, the opening net asset figure as at January 1, 2013 was restated to reflect accounting policy adjustments made in accordance with IFRS. All figures presented for periods prior to January 1, 2013 were prepared in accordance with Canadian GAAP and subsequent thereto were prepared in accordance with IFRS.

² Net assets and distributions are based on the actual number of units outstanding at the relevant time. The total increase (decrease) from operations is based on the weighted average number of units outstanding during the period.

³ Distributions were paid in cash, reinvested in additional units of the Fund, or both.

Ratios and Supplemental Data - Premium Class Units

	2015	2014	2013	2012	2011
Total Net Asset Value (000s)⁴	\$ 85,437	\$ 124,892	\$ 137,207	\$ 148,711	\$ 150,117
Number of Units Outstanding⁴	8,543,706	12,489,238	13,720,735	14,871,105	15,011,726
Management Expense Ratio⁵	0.14%	0.14%	0.15%	0.15%	0.16%
Management Expense Ratio before waivers or absorptions⁶	0.44%	0.45%	0.45%	0.45%	0.45%
Trading Expense Ratio⁷	0.00%	0.00%	0.00%	0.00%	0.00%
Portfolio Turnover Rate⁸	n/a	n/a	n/a	n/a	n/a
Net Asset Value per Unit	\$ 10.00	\$ 10.00	\$ 10.00	\$ 10.00	\$ 10.00

⁴ This information is presented as at December 31 of the period(s) shown.

⁵ Management expense ratio is based on the total expenses of the fund (excluding commissions and other portfolio transaction costs), incurred by or allocated to a class of units for the period shown, expressed as an annualized percentage of the daily average net asset value of that class during the period.

⁶ The decision to waive and/or absorb management fees and operating expenses is at the discretion of the Manager. The practice of waiving and/or absorbing management fees and operating expenses may continue indefinitely or may be terminated at any time without notice to unitholders.

⁷ The trading expense ratio represents total commissions and other portfolio transaction costs before income taxes expressed as an annualized percentage of the daily average net asset value during the period. Spreads associated with fixed income securities trading are not ascertainable and, for that reason, are not included in the trading expense ratio calculation.

⁸ The portfolio turnover rate indicates how actively the portfolio advisor and/or portfolio sub-advisor manages the portfolio investments. A portfolio turnover rate of 100% is equivalent to a fund buying and selling all of the securities in its portfolio once in the course of the period. The higher a portfolio turnover rate in a period, the greater the trading costs payable by a fund in the period, and the greater the chance of an investor receiving taxable capital gains in the year. There is not necessarily a relationship between a high turnover rate and the performance of a fund.

CIBC U.S. Dollar Money Market Fund

The Fund's Net Assets per Unit¹ (in US\$) - Class O Units

	2015	2014	2013	2012	2011
Net Assets, beginning of period	\$ 10.00	\$ 10.00	\$ 10.00	\$ 10.00	\$ 10.00
Increase (decrease) from operations:					
Total revenue	\$ 0.03	\$ 0.03	\$ 0.03	\$ 0.03	\$ 0.03
Total expenses	—	—	—	—	—
Realized gains (losses) for the period	—	—	—	—	—
Unrealized gains (losses) for the period	—	—	—	—	—
Total increase (decrease) from operations²	\$ 0.03	\$ 0.03	\$ 0.03	\$ 0.03	\$ 0.03
Distributions:					
From income (excluding dividends)	\$ 0.03	\$ 0.03	\$ 0.03	\$ 0.03	\$ 0.03
From dividends	—	—	—	—	—
From capital gains	—	—	—	—	—
Return of capital	—	—	—	—	—
Total Distributions³	\$ 0.03	\$ 0.03	\$ 0.03	\$ 0.03	\$ 0.03
Net Assets, end of period	\$ 10.00	\$ 10.00	\$ 10.00	\$ 10.00	\$ 10.00

¹ This information is derived from the Fund's audited annual financial statements. The Fund adopted International Financial Reporting Standards (*IFRS*) on January 1, 2014. Previously, the Fund prepared its financial statements in accordance with Canadian Generally Accepted Accounting Principles (*GAAP*) as defined in Part V of the CPA Canada Handbook. Under Canadian GAAP, the Fund measured fair values of its investments in accordance with CICA Handbook Section 3855 which required the use of bid prices for long positions and ask prices for short positions. As such, the net assets per unit figure presented in the financial statements may differ from the net asset value calculated for fund pricing purposes. An explanation of these differences can be found in the notes to the financial statements issued prior to January 1, 2014. Upon adoption of IFRS, the Fund measures the fair value of its investments by using the close market prices, where the close market price falls within the bid-ask spread. As such, the Fund's accounting policies for measuring the fair value of investments in the financial statements are consistent with those used in measuring the net asset value for transactions with unitholders. Accordingly, the opening net asset figure as at January 1, 2013 was restated to reflect accounting policy adjustments made in accordance with IFRS. All figures presented for periods prior to January 1, 2013 were prepared in accordance with Canadian GAAP and subsequent thereto were prepared in accordance with IFRS.

² Net assets and distributions are based on the actual number of units outstanding at the relevant time. The total increase (decrease) from operations is based on the weighted average number of units outstanding during the period.

³ Distributions were paid in cash, reinvested in additional units of the Fund, or both.

Ratios and Supplemental Data - Class O Units

	2015	2014	2013	2012	2011
Total Net Asset Value (000s)⁴	\$ 12,627	\$ 15,586	\$ 16,633	\$ 15,881	\$ 10,726
Number of Units Outstanding⁴	1,262,709	1,558,623	1,663,324	1,588,052	1,072,627
Management Expense Ratio⁵	0.00%	0.00%	0.00%	0.00%	0.00%
Management Expense Ratio before waivers or absorptions⁶	0.01%	0.01%	0.00%	0.02%	0.02%
Trading Expense Ratio⁷	0.00%	0.00%	0.00%	0.00%	0.00%
Portfolio Turnover Rate⁸	n/a	n/a	n/a	n/a	n/a
Net Asset Value per Unit	\$ 10.00	\$ 10.00	\$ 10.00	\$ 10.00	\$ 10.00

⁴ This information is presented as at December 31 of the period(s) shown.

⁵ Management expense ratio is based on the total expenses of the fund (excluding commissions and other portfolio transaction costs), incurred by or allocated to a class of units for the period shown, expressed as an annualized percentage of the daily average net asset value of that class during the period.

⁶ The decision to waive and/or absorb management fees and operating expenses is at the discretion of the Manager. The practice of waiving and/or absorbing management fees and operating expenses may continue indefinitely or may be terminated at any time without notice to unitholders.

⁷ The trading expense ratio represents total commissions and other portfolio transaction costs before income taxes expressed as an annualized percentage of the daily average net asset value during the period. Spreads associated with fixed income securities trading are not ascertainable and, for that reason, are not included in the trading expense ratio calculation.

⁸ The portfolio turnover rate indicates how actively the portfolio advisor and/or portfolio sub-advisor manages the portfolio investments. A portfolio turnover rate of 100% is equivalent to a fund buying and selling all of the securities in its portfolio once in the course of the period. The higher a portfolio turnover rate in a period, the greater the trading costs payable by a fund in the period, and the greater the chance of an investor receiving taxable capital gains in the year. There is not necessarily a relationship between a high turnover rate and the performance of a fund.

Management Fees

The Fund, either directly or indirectly, pays an annual management fee to CIBC to cover the costs of managing the Fund. Management fees are based on the net asset value of the Fund and are calculated daily and paid monthly. Management fees are paid to CIBC in consideration for providing, or arranging for the provision of, management, distribution, and portfolio advisory services. Advertising and promotional expenses, office overhead expenses, trailing commissions, and the fees of the portfolio sub-advisor(s) are paid by CIBC out of the management fees received from the Fund. The Fund is required to pay applicable taxes on the management fees paid to CIBC. Refer to the Simplified Prospectus for the maximum annual management fee rate for each class of units. For Class O units, the management fee is negotiated with and paid by, or as directed by, unitholders or dealers and discretionary managers on behalf of unitholders. Such Class O management fee will not exceed the Class A unit management fee rate.

The following table shows a breakdown of the services received in consideration of the management fees, as a percentage of the management fees collected from the Fund for the period ended December 31, 2015. These amounts do not include waived fees or absorbed expenses.

	Class A Units	Premium Class Units
Sales and trailing commissions paid to dealers	50.91%	100.00%
General administration, investment advice, and profit	49.09%	0.00%

Past Performance

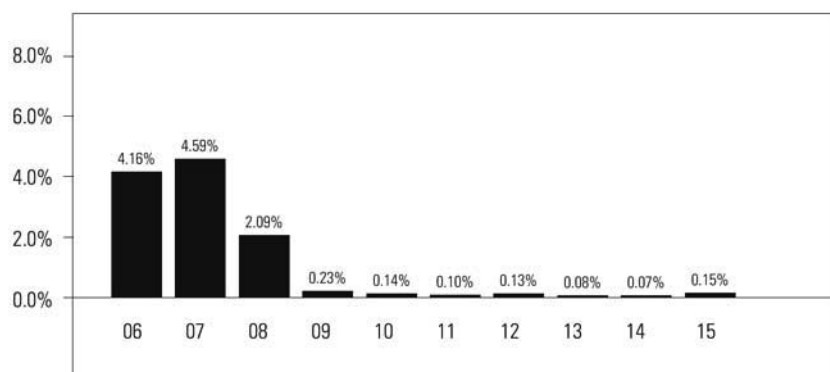
The performance data provided assumes reinvestment of distributions only and does not take into account sales, redemption, distribution, or other optional charges payable by any unitholder that would have reduced returns. Past performance does not necessarily indicate how a fund will perform in the future.

The Fund's returns are after the deduction of fees and expenses, and the difference in returns between classes of units is primarily due to differences in the management expense ratio. See the section entitled *Financial Highlights* for the management expense ratio.

Year-by-Year Returns

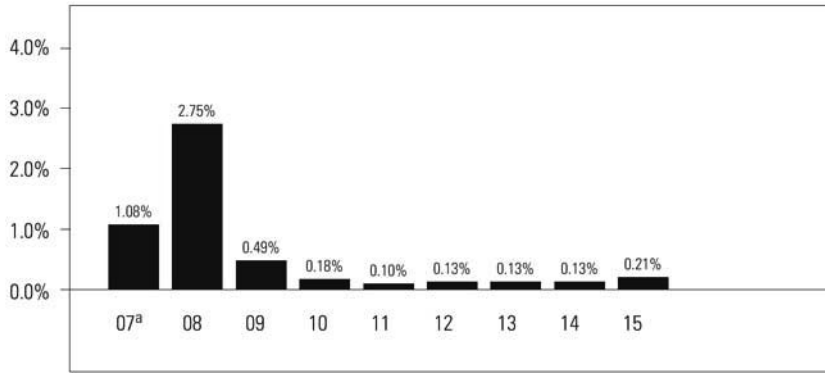
These bar charts show the annual performance of each class of units of the Fund for each of the periods shown, and illustrate how the performance has changed from period to period. These bar charts show, in percentage terms, how an investment made on January 1 would have increased or decreased by December 31, unless otherwise indicated.

Class A Units



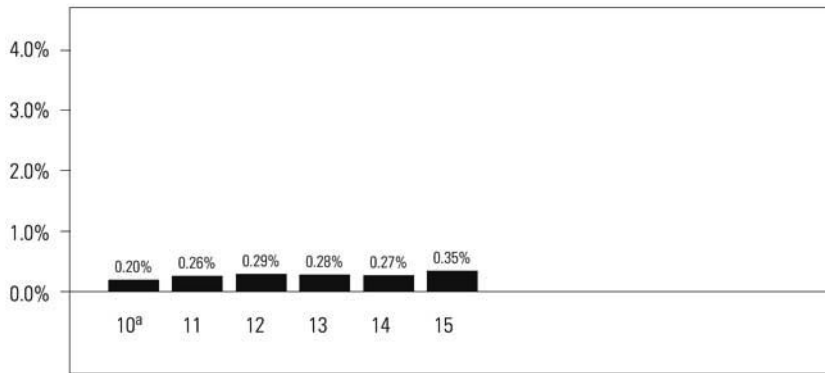
CIBC U.S. Dollar Money Market Fund

Premium Class Units



^a 2007 return is for the period from October 15, 2007 to December 31, 2007.

Class O Units



^a 2010 return is for the period from June 1, 2010 to December 31, 2010.

CIBC U.S. Dollar Money Market Fund

Summary of Investment Portfolio (as at December 31, 2015)

The summary of investment portfolio may change due to ongoing portfolio transactions of the investment fund. A quarterly update is available by visiting www.cibc.com/mutualfunds. The Top Positions table shows a fund's 25 largest positions. For funds with fewer than 25 positions in total, all positions are shown.

<i>Portfolio Breakdown</i>	<i>% of Net Asset Value</i>
Short-Term Investments	99.9
Cash	0.1

<i>Top Positions</i>	<i>% of Net Asset Value</i>
Merit Trust, Senior Discount Note, 0.51%, 2016/02/02	7.8
Royal Bank of Canada, Bankers' Acceptance, 0.24%, 2016/01/19	7.3
Plaza Trust, Discount Note, 0.48%, 2016/01/11	6.8
Prime Trust, Senior Discount Note, 0.49%, 2016/01/06	6.5
Storm King Funding, Discount Note, 0.74%, 2016/03/21	5.3
Banner Trust, Discount Note, 0.68%, 2016/02/25	5.2
Caisse centrale Desjardins du Québec, Bearer Deposit Note, 0.41%, 2016/03/01	5.1
Province of British Columbia, Discount Note, 0.34%, 2016/05/03	5.0
Zeus Receivables Trust, Senior Discount Note, 0.47%, 2016/01/21	4.7
Fusion Trust, Series 'AA', Discount Note, 0.51%, 2016/01/27	4.7
Clarity Trust, Series 'A', Discount Note, 0.65%, 2016/03/02	4.7
Ridge Trust, Discount Note, 0.85%, 2016/03/22	4.3
Clarity Trust, Series 'A', Discount Note, 0.82%, 2016/03/16	4.0
Zeus Receivables Trust, Senior Discount Note, 0.47%, 2016/01/12	3.9
Canadian Master Trust, Discount Note, 0.49%, 2016/01/06	3.7
Fusion Trust, Discount Note, 0.88%, 2016/03/22	3.6
Caisse centrale Desjardins du Québec, Bearer Deposit Note, 0.32%, 2016/01/22	3.4
Toronto-Dominion Bank (The), Bankers' Acceptance, 0.24%, 2016/01/07	3.2
Storm King Funding, Discount Note, 0.51%, 2016/01/12	3.1
Prime Trust, Senior Discount Note, 0.68%, 2016/02/25	2.1
Canadian Master Trust, Discount Note, 0.46%, 2016/01/26	2.0
OMERS Financial Trust, Discount Note, 0.45%, 2016/03/04	1.6
Canadian Master Trust, Discount Note, 0.74%, 2016/04/06	1.5
Canadian Master Trust, Discount Note, 0.81%, 2016/02/25	0.5

The management report of fund performance may contain forward-looking statements. Forward-looking statements include statements that are predictive in nature, that depend upon or refer to future events or conditions, or that include words such as “expects”, “anticipates”, “intends”, “plans”, “believes”, “estimates”, or other similar wording. In addition, any statements that may be made concerning future performance, strategies, or prospects and possible future actions taken by the fund, are also forward-looking statements. These statements involve known and unknown risks, uncertainties, and other factors that may cause the actual results and achievements of the fund to differ materially from those expressed or implied by such statements. Such factors include, but are not limited to: general economic, market, and business conditions; fluctuations in securities prices, interest rates, and foreign currency exchange rates; changes in government regulations; and catastrophic events. We do not undertake, and specifically disclaim, any obligation to update or revise any forward-looking statements, whether as a result of new information, future developments, or otherwise prior to the release of the next management report of fund performance.

**CIBC Mutual Funds
CIBC Family of Managed Portfolios**

CIBC

18 York Street, Suite 1300
Toronto, Ontario
M5J 2T8

CIBC Securities Inc.

1-800-465-3863

Website

www.cibc.com/mutualfunds



CIBC Securities Inc. is a wholly-owned subsidiary of CIBC and is the principal distributor of the CIBC Mutual Funds and the CIBC Family of Managed Portfolios. CIBC Family of Managed Portfolios are mutual funds that primarily invest in other CIBC Mutual Funds. To obtain a copy of the simplified prospectus, call CIBC Securities Inc. at 1-800-465-3863 or ask your advisor.