



Annual Management Report of Fund Performance

for the financial year ended December 31, 2019

All figures are reported in Canadian dollars unless otherwise noted.

This annual management report of fund performance contains financial highlights but does not contain the complete annual financial statements of the investment fund. You can get a copy of the annual financial statements at your request, and at no cost, by calling toll-free at 1-800-465-3863, by writing to us at CIBC, 18 York Street, Suite 1300, Toronto, Ontario, M5J 2T8, or by visiting our website at www.cibc.com/mutualfunds or SEDAR at www.sedar.com.

Unitholders may also contact us using one of these methods to request a copy of the investment fund's interim financial report, proxy voting policies and procedures, proxy voting disclosure record, or quarterly portfolio disclosure.

Management Discussion of Fund Performance

Investment Objective and Strategies

Investment Objective: CIBC U.S. Broad Market Index Fund (the *Fund*) seeks to provide long-term growth through capital appreciation. The Fund is managed to obtain a return that approximates the performance of the Wilshire 5000 Total Market Index, which is intended to represent the broad U.S. equity market with a market value-weighted index of more than 5,000 U.S. securities.

Investment Strategies: The Fund uses passive management strategies to create a portfolio with characteristics similar to the Wilshire 5000 Total Market Index, allowing the Fund to obtain a return that approximates the performance of that index in Canadian dollars.

Risk

The Fund is a U.S. equity fund that is suitable for long-term investors who can tolerate medium investment risk.

For the period ended December 31, 2019, the Fund's overall level of risk remained as discussed in the simplified prospectus.

Results of Operations

The Fund's portfolio advisor is CIBC Asset Management Inc. (*CAMI* or the *Portfolio Advisor*). The commentary that follows provides a summary of the results of operations for the period ended December 31, 2019. All dollar figures are expressed in thousands, unless otherwise indicated.

The Fund's net asset value increased by 22% during the period, from \$1,341,866 as at December 31, 2018 to \$1,631,897 as at December 31, 2019. Positive investment performance was partially offset by net redemptions of \$27,457 in the period, which included redemptions of \$2,304 due to rebalancing of a portfolio product that holds units of the Fund, resulting in an overall increase in net asset value.

Class A units of the Fund posted a return of 22.7% for the period. The Fund's benchmark, the Wilshire 5000 Total Market Index (the *benchmark*), returned 23.6% for the same period. The Fund's return is after the deduction of fees and expenses, unlike the benchmark's

return. See *Past Performance* for the returns of other classes of units offered by the Fund.

The U.S. Federal Reserve Board (the *Fed*) adopted a more accommodative tone early in the period, and subsequently lowered the federal funds rate three times between July and October, ending at a range of 1.50% to 1.75%. The Fed also resumed growing its balance sheet, which supported risk appetite among investors.

U.S. markets performed strongly during the year, supported by a favourable corporate environment. Consumer sentiment and the U.S. dollar both increased. However, U.S. equities experienced periods of volatility, particularly in the first half of the year, when it was unclear if global economic growth would be derailed by an escalation of U.S.-China trade tensions. Near the end of the period, those concerns were allayed as the U.S. and China agreed to a partial, "phase one" trade deal.

The top-performing sub-sectors within the U.S. equity market were the semiconductor equipment, the technology hardware storage and peripherals and the diversified support services sub-sectors. The department stores, drug retailers and alternative carriers sub-sectors underperformed.

As an index fund, the Fund's composition is meant to reflect a portfolio with characteristics similar to that of the benchmarks. Securities were added and sold during the period for index-matching purposes.

Recent Developments

The composition of the Independent Review Committee (*IRC*) changed during the period. Effective February 28, 2019, Susan Silma resigned as a member of the IRC and, effective April 27, 2019, Barry Pollock was appointed as a member of the IRC.

Related Party Transactions

Canadian Imperial Bank of Commerce (*CIBC*) and its affiliates have the following roles and responsibilities with respect to the Fund, and

receive the fees described below in connection with their roles and responsibilities.

Manager

CIBC is the Fund's manager (the *Manager*). CIBC receives management fees with respect to the Fund's day-to-day business and operations, calculated based on the net asset value of each respective class of units of the Fund as described in the section entitled *Management Fees*. The Manager compensates its wholesalers in connection with their marketing activities regarding the Fund. From time to time, CIBC may invest in units of the Fund.

Trustee

CIBC Trust Corporation, a wholly-owned subsidiary of CIBC, is the Fund's trustee (the *Trustee*). The Trustee holds title to the Fund's property (cash and securities) on behalf of its unitholders.

Portfolio Advisor

The portfolio advisor provides, or arranges to provide, investment advice and portfolio management services to the Fund. CAMI, a wholly-owned subsidiary of CIBC, is the Fund's portfolio advisor.

Distributor

Dealers and other firms sell the units of the Fund to investors. These dealers and other firms include CIBC's related dealers such as the principal distributor, CIBC Securities Inc. (*CIBC SI*), the CIBC Investor's Edge discount brokerage division of CIBC Investor Services Inc. (*CIBC ISI*), the CIBC Imperial Investor Service division of CIBC ISI, and the CIBC Wood Gundy division of CIBC World Markets Inc. (*CIBC WM*). CIBC SI, CIBC ISI, and CIBC WM are wholly-owned subsidiaries of CIBC.

CIBC may pay trailing commissions to these dealers and firms, except for CIBC SI, in connection with the sale of units of the Fund. These dealers and other firms may pay a portion of these trailing commissions to their advisors who sell units of the Fund to investors. CIBC does not pay trailing commissions to CIBC SI for selling units of the Fund, although overall sales of CIBC funds may be considered in assessing the performance of their advisors and may therefore contribute to their annual compensation.

Brokerage Arrangements and Soft Dollars

The Portfolio Advisor makes decisions, including the selection of markets and dealers and the negotiation of commissions, with respect to the purchase and sale of portfolio securities, certain derivative products and the execution of portfolio transactions. Brokerage business may be allocated by the Portfolio Advisor to CIBC WM and CIBC World Markets Corp., each a subsidiary of CIBC. CIBC WM and CIBC World Markets Corp. may also earn spreads on the sale of fixed income securities and other securities and certain derivative products to the Fund. A spread is the difference between the bid and ask prices for a security in the applicable marketplace, with respect to the execution of portfolio transactions. The spread will differ based upon various factors such as the type and liquidity of the security.

Dealers, including CIBC WM and CIBC World Markets Corp., may furnish goods and services, other than order execution, to the Portfolio Advisor in partial exchange for processing trades through them (referred to in the industry as "soft dollar" arrangements). These goods and services are paid for with a portion of the brokerage commissions and assist the Portfolio Advisor with investment decision-making services for the Fund or relate directly to the execution of portfolio transactions on behalf of the Fund.

In addition, CIBC may enter into commission recapture arrangements with certain dealers with respect to the Fund. Any commission recaptured will be paid to the Fund.

During the period, the Fund did not pay any brokerage commissions or other fees to CIBC WM or CIBC World Markets Corp. Spreads associated with fixed income and other securities are not ascertainable and, for that reason, cannot be included when determining these amounts.

Fund Transactions

The Fund may enter into one or more of the following transactions (the *Related Party Transactions*) in reliance on the standing instructions issued by the IRC:

- invest in or hold equity securities of CIBC or issuers related to a portfolio sub-advisor;
- invest in or hold non-exchange-traded debt securities of CIBC or an issuer related to CIBC, with terms-to-maturity of 365 days or more, issued in a primary offering and in the secondary market;
- make an investment in the securities of an issuer for which CIBC WM, CIBC World Markets Corp., or any affiliate of CIBC (a *Related Dealer*) acts as an underwriter during the offering of the securities or at any time during the 60-day period following the completion of the offering of such securities (in the case of a "private placement" offering, in accordance with the exemptive relief order granted by the Canadian securities regulatory authorities and in accordance with the policies and procedures relating to such investment);
- purchase equity or debt securities from or sell them to a Related Dealer, where it is acting as principal;
- undertake currency and currency derivative transactions where a Related Dealer is the counterparty;
- purchase securities from or sell securities to another investment fund or a managed account managed by the Manager or an affiliate; and
- engage in in-specie transfers by receiving portfolio securities from, or delivering portfolio securities to, a managed account or another investment fund managed by the Manager or an affiliate, in respect of a purchase or redemption on units in the fund, subject to certain conditions.

At least annually, the IRC reviews the Related Party Transactions for which they have issued standing instructions. The IRC is required to advise the Canadian securities regulatory authorities, after a matter has been referred or reported to the IRC by the Manager, if it

determines that an investment decision was not made in accordance with a condition imposed by securities legislation or the IRC in any Related Party Transactions requiring its approval or recommendation, as applicable.

Custodian

CIBC Mellon Trust Company is the Fund's custodian (the *Custodian*). The Custodian holds all cash and securities for the Fund and ensures that those assets are kept separate from any other cash or securities that the Custodian might be holding. The Custodian also provides other services to the Fund including record-keeping and processing of foreign exchange transactions. The Custodian may hire sub-custodians for the Fund. The fees and spreads for services of the Custodian directly related to the execution of portfolio transactions by the Fund are paid by CAMI and/or dealer(s) directed by CAMI, up to the amount of the credits generated under soft dollar arrangements from trading on behalf of the Fund during that month. All other fees and spreads for the services of the Custodian are paid by the Manager and charged to the Fund on a recoverable basis. CIBC owns a 50% interest in the Custodian.

Service Provider

CIBC Mellon Global Securities Services Company (*CIBC GSS*) provides certain services to the Fund, including securities lending, fund accounting and reporting, and portfolio valuation. Such servicing fees are paid by the Manager and charged to the Fund on a recoverable basis. CIBC indirectly owns a 50% interest in CIBC GSS.

Financial Highlights

The following tables show selected key financial information about the Fund and are intended to help you understand the Fund's financial performance for the period ended December 31.

The Fund's Net Assets per Unit¹ - Class A Units

	2019	2018	2017	2016	2015
Net Assets, beginning of period	\$ 47.89	\$ 47.49	\$ 42.92	\$ 39.96	\$ 34.37
Increase (decrease) from operations:					
Total revenue	\$ 1.47	\$ 1.02	\$ 1.15	\$ 1.00	\$ 0.90
Total expenses	(0.79)	(0.76)	(0.68)	(0.60)	(0.57)
Realized gains (losses) for the period	0.84	0.51	0.33	0.33	0.76
Unrealized gains (losses) for the period	9.37	0.33	4.21	2.24	4.80
Total increase (decrease) from operations²	\$ 10.89	\$ 1.10	\$ 5.01	\$ 2.97	\$ 5.89
Distributions:					
From income (excluding dividends)	\$ 0.61	\$ 0.23	\$ 0.48	\$ 0.32	\$ 0.33
From dividends	—	—	—	—	—
From capital gains	—	—	—	—	—
Return of capital	—	—	—	—	—
Total Distributions³	\$ 0.61	\$ 0.23	\$ 0.48	\$ 0.32	\$ 0.33
Net Assets, end of period	\$ 58.15	\$ 47.89	\$ 47.49	\$ 42.92	\$ 39.96

¹ This information is derived from the Fund's audited annual financial statements.

² Net assets and distributions are based on the actual number of units outstanding at the relevant time. The total increase (decrease) from operations is based on the weighted average number of units outstanding during the period.

³ Distributions were paid in cash, reinvested in additional units of the Fund, or both.

Ratios and Supplemental Data - Class A Units

	2019	2018	2017	2016	2015
Total Net Asset Value (000s)⁴	\$ 410,938	\$ 350,902	\$ 383,499	\$ 343,857	\$ 395,044
Number of Units Outstanding⁴	7,066,485	7,327,132	8,075,974	8,011,342	9,885,719
Management Expense Ratio⁵	1.18%	1.18%	1.18%	1.18%	1.17%
Management Expense Ratio before waivers or absorptions⁶	1.38%	1.38%	1.40%	1.40%	1.41%
Trading Expense Ratio⁷	0.00%	0.00%	0.00%	0.00%	0.00%
Portfolio Turnover Rate⁸	5.00%	3.35%	4.79%	4.48%	5.23%
Net Asset Value per Unit	\$ 58.15	\$ 47.89	\$ 47.49	\$ 42.92	\$ 39.96

⁴ This information is presented as at December 31 of the period(s) shown.

⁵ Management expense ratio is based on the total expenses of the fund (excluding commissions and other portfolio transaction costs), incurred by or allocated to a class of units for the period shown, expressed as an annualized percentage of the daily average net asset value of that class during the period.

⁶ The decision to waive and/or absorb management fees and operating expenses is at the discretion of the Manager. The practice of waiving and/or absorbing management fees and operating expenses may continue indefinitely or may be terminated at any time without notice to unitholders.

⁷ The trading expense ratio represents total commissions and other portfolio transaction costs before income taxes expressed as an annualized percentage of the daily average net asset value during the period. Spreads associated with fixed income securities trading are not ascertainable and, for that reason, are not included in the trading expense ratio calculation.

⁸ The portfolio turnover rate indicates how actively the portfolio advisor and/or portfolio sub-advisor manages the portfolio investments. A portfolio turnover rate of 100% is equivalent to a fund buying and selling all of the securities in its portfolio once in the course of the period. The higher a portfolio turnover rate in a period, the greater the trading costs payable by a fund in the period, and the greater the chance of an investor receiving taxable capital gains in the year. There is not necessarily a relationship between a high turnover rate and the performance of a fund.

CIBC U.S. Broad Market Index Fund

The Fund's Net Assets per Unit¹ - Premium Class Units

	2019	2018	2017	2016	2015
Net Assets, beginning of period	\$ 25.39	\$ 25.23	\$ 22.80	\$ 21.26	\$ 18.30
Increase (decrease) from operations:					
Total revenue	\$ 0.78	\$ 0.55	\$ 0.61	\$ 0.53	\$ 0.48
Total expenses	(0.19)	(0.19)	(0.17)	(0.15)	(0.15)
Realized gains (losses) for the period	0.46	0.29	0.18	0.18	0.39
Unrealized gains (losses) for the period	4.89	(0.55)	2.22	1.42	2.38
Total increase (decrease) from operations²	\$ 5.94	\$ 0.10	\$ 2.84	\$ 1.98	\$ 3.10
Distributions:					
From income (excluding dividends)	\$ 0.57	\$ 0.37	\$ 0.45	\$ 0.39	\$ 0.35
From dividends	—	—	—	—	—
From capital gains	—	—	—	—	—
Return of capital	—	—	—	—	—
Total Distributions³	\$ 0.57	\$ 0.37	\$ 0.45	\$ 0.39	\$ 0.35
Net Assets, end of period	\$ 30.83	\$ 25.39	\$ 25.23	\$ 22.80	\$ 21.26

¹ This information is derived from the Fund's audited annual financial statements.

² Net assets and distributions are based on the actual number of units outstanding at the relevant time. The total increase (decrease) from operations is based on the weighted average number of units outstanding during the period.

³ Distributions were paid in cash, reinvested in additional units of the Fund, or both.

Ratios and Supplemental Data - Premium Class Units

	2019	2018	2017	2016	2015
Total Net Asset Value (000s)⁴	\$ 479,769	\$ 367,738	\$ 278,051	\$ 204,486	\$ 150,375
Number of Units Outstanding⁴	15,560,473	14,485,236	11,021,880	8,970,566	7,072,275
Management Expense Ratio⁵	0.39%	0.39%	0.39%	0.39%	0.39%
Management Expense Ratio before waivers or absorptions⁶	0.87%	0.87%	0.88%	0.88%	0.89%
Trading Expense Ratio⁷	0.00%	0.00%	0.00%	0.00%	0.00%
Portfolio Turnover Rate⁸	5.00%	3.35%	4.79%	4.48%	5.23%
Net Asset Value per Unit	\$ 30.83	\$ 25.39	\$ 25.23	\$ 22.80	\$ 21.26

⁴ This information is presented as at December 31 of the period(s) shown.

⁵ Management expense ratio is based on the total expenses of the fund (excluding commissions and other portfolio transaction costs), incurred by or allocated to a class of units for the period shown, expressed as an annualized percentage of the daily average net asset value of that class during the period.

⁶ The decision to waive and/or absorb management fees and operating expenses is at the discretion of the Manager. The practice of waiving and/or absorbing management fees and operating expenses may continue indefinitely or may be terminated at any time without notice to unitholders.

⁷ The trading expense ratio represents total commissions and other portfolio transaction costs before income taxes expressed as an annualized percentage of the daily average net asset value during the period. Spreads associated with fixed income securities trading are not ascertainable and, for that reason, are not included in the trading expense ratio calculation.

⁸ The portfolio turnover rate indicates how actively the portfolio advisor and/or portfolio sub-advisor manages the portfolio investments. A portfolio turnover rate of 100% is equivalent to a fund buying and selling all of the securities in its portfolio once in the course of the period. The higher a portfolio turnover rate in a period, the greater the trading costs payable by a fund in the period, and the greater the chance of an investor receiving taxable capital gains in the year. There is not necessarily a relationship between a high turnover rate and the performance of a fund.

CIBC U.S. Broad Market Index Fund

The Fund's Net Assets per Unit¹ - Institutional Class Units

	2019	2018	2017	2016	2015 ^a
Net Assets, beginning of period	\$ 12.56	\$ 12.48	\$ 11.28	\$ 10.54	\$ 10.35 ^b
Increase (decrease) from operations:					
Total revenue	\$ 0.39	\$ 0.27	\$ 0.29	\$ 0.27	\$ —
Total expenses	(0.07)	(0.08)	(0.06)	(0.06)	—
Realized gains (losses) for the period	0.23	0.14	0.08	0.09	—
Unrealized gains (losses) for the period	2.48	(0.27)	1.47	2.08	0.86
Total increase (decrease) from operations²	\$ 3.03	\$ 0.06	\$ 1.78	\$ 2.38	\$ 0.86
Distributions:					
From income (excluding dividends)	\$ 0.30	\$ 0.20	\$ 0.25	\$ 0.21	\$ 0.21
From dividends	—	—	—	—	—
From capital gains	—	—	—	—	—
Return of capital	—	—	—	—	—
Total Distributions³	\$ 0.30	\$ 0.20	\$ 0.25	\$ 0.21	\$ 0.21
Net Assets, end of period	\$ 15.26	\$ 12.56	\$ 12.48	\$ 11.28	\$ 10.54

^a Information presented is for the period from October 30, 2015 to December 31, 2015.

^b Represents the price on the first day in the period in which the class became active.

¹ This information is derived from the Fund's audited annual financial statements.

² Net assets and distributions are based on the actual number of units outstanding at the relevant time. The total increase (decrease) from operations is based on the weighted average number of units outstanding during the period.

³ Distributions were paid in cash, reinvested in additional units of the Fund, or both.

Ratios and Supplemental Data - Institutional Class Units

	2019	2018	2017	2016	2015 ^a
Total Net Asset Value (000s)⁴	\$ 2,680	\$ 2,143	\$ 1,428	\$ 520	\$ —
Number of Units Outstanding⁴	175,691	170,613	114,428	46,104	2
Management Expense Ratio⁵	0.24%	0.24%	0.23%	0.25%	0.23%*
Management Expense Ratio before waivers or absorptions⁶	0.69%	0.69%	0.68%	0.74%	0.95%*
Trading Expense Ratio⁷	0.00%	0.00%	0.00%	0.00%	0.00%
Portfolio Turnover Rate⁸	5.00%	3.35%	4.79%	4.48%	5.23%
Net Asset Value per Unit	\$ 15.26	\$ 12.56	\$ 12.48	\$ 11.28	\$ 10.54

^a Information presented is for the period from October 30, 2015 to December 31, 2015.

* Ratio has been annualized.

⁴ This information is presented as at December 31 of the period(s) shown.

⁵ Management expense ratio is based on the total expenses of the fund (excluding commissions and other portfolio transaction costs), incurred by or allocated to a class of units for the period shown, expressed as an annualized percentage of the daily average net asset value of that class during the period.

⁶ The decision to waive and/or absorb management fees and operating expenses is at the discretion of the Manager. The practice of waiving and/or absorbing management fees and operating expenses may continue indefinitely or may be terminated at any time without notice to unitholders.

⁷ The trading expense ratio represents total commissions and other portfolio transaction costs before income taxes expressed as an annualized percentage of the daily average net asset value during the period. Spreads associated with fixed income securities trading are not ascertainable and, for that reason, are not included in the trading expense ratio calculation.

⁸ The portfolio turnover rate indicates how actively the portfolio advisor and/or portfolio sub-advisor manages the portfolio investments. A portfolio turnover rate of 100% is equivalent to a fund buying and selling all of the securities in its portfolio once in the course of the period. The higher a portfolio turnover rate in a period, the greater the trading costs payable by a fund in the period, and the greater the chance of an investor receiving taxable capital gains in the year. There is not necessarily a relationship between a high turnover rate and the performance of a fund.

CIBC U.S. Broad Market Index Fund

The Fund's Net Assets per Unit¹ - Class O Units

	2019	2018	2017	2016	2015
Net Assets, beginning of period	\$ 28.63	\$ 28.44	\$ 25.69	\$ 23.94	\$ 20.59
Increase (decrease) from operations:					
Total revenue	\$ 0.88	\$ 0.61	\$ 0.69	\$ 0.60	\$ 0.54
Total expenses	(0.09)	(0.10)	(0.08)	(0.08)	(0.08)
Realized gains (losses) for the period	0.51	0.31	0.20	0.20	0.45
Unrealized gains (losses) for the period	5.71	0.09	2.58	1.66	2.91
Total increase (decrease) from operations²	\$ 7.01	\$ 0.91	\$ 3.39	\$ 2.38	\$ 3.82
Distributions:					
From income (excluding dividends)	\$ 0.77	\$ 0.52	\$ 0.61	\$ 0.52	\$ 0.47
From dividends	—	—	—	—	—
From capital gains	—	—	—	—	—
Return of capital	—	—	—	—	—
Total Distributions³	\$ 0.77	\$ 0.52	\$ 0.61	\$ 0.52	\$ 0.47
Net Assets, end of period	\$ 34.78	\$ 28.63	\$ 28.44	\$ 25.69	\$ 23.94

¹ This information is derived from the Fund's audited annual financial statements.

² Net assets and distributions are based on the actual number of units outstanding at the relevant time. The total increase (decrease) from operations is based on the weighted average number of units outstanding during the period.

³ Distributions were paid in cash, reinvested in additional units of the Fund, or both.

Ratios and Supplemental Data - Class O Units

	2019	2018	2017	2016	2015
Total Net Asset Value (000s)⁴	\$ 738,510	\$ 621,083	\$ 619,227	\$ 548,868	\$ 490,799
Number of Units Outstanding⁴	21,232,718	21,695,436	21,769,286	21,361,821	20,498,774
Management Expense Ratio⁵	0.00%	0.00%	0.00%	0.00%	0.00%
Management Expense Ratio before waivers or absorptions⁶	0.00%	0.00%	0.00%	0.00%	0.00%
Trading Expense Ratio⁷	0.00%	0.00%	0.00%	0.00%	0.00%
Portfolio Turnover Rate⁸	5.00%	3.35%	4.79%	4.48%	5.23%
Net Asset Value per Unit	\$ 34.78	\$ 28.63	\$ 28.44	\$ 25.69	\$ 23.94

⁴ This information is presented as at December 31 of the period(s) shown.

⁵ Management expense ratio is based on the total expenses of the fund (excluding commissions and other portfolio transaction costs), incurred by or allocated to a class of units for the period shown, expressed as an annualized percentage of the daily average net asset value of that class during the period.

⁶ The decision to waive and/or absorb management fees and operating expenses is at the discretion of the Manager. The practice of waiving and/or absorbing management fees and operating expenses may continue indefinitely or may be terminated at any time without notice to unitholders.

⁷ The trading expense ratio represents total commissions and other portfolio transaction costs before income taxes expressed as an annualized percentage of the daily average net asset value during the period. Spreads associated with fixed income securities trading are not ascertainable and, for that reason, are not included in the trading expense ratio calculation.

⁸ The portfolio turnover rate indicates how actively the portfolio advisor and/or portfolio sub-advisor manages the portfolio investments. A portfolio turnover rate of 100% is equivalent to a fund buying and selling all of the securities in its portfolio once in the course of the period. The higher a portfolio turnover rate in a period, the greater the trading costs payable by a fund in the period, and the greater the chance of an investor receiving taxable capital gains in the year. There is not necessarily a relationship between a high turnover rate and the performance of a fund.

Management Fees

The Fund, either directly or indirectly, pays CIBC an annual management fee to cover the costs of managing the Fund. Management fees are based on the Fund's net asset value and are calculated daily and paid monthly. Management fees are paid to CIBC in consideration for providing, or arranging for the provision of, management, distribution, and portfolio advisory services. Advertising and promotional expenses, office overhead expenses and trailing commissions are paid by CIBC out of the management fees received from the Fund. The Fund is required to pay applicable taxes on the management fees paid to CIBC. Refer to the Simplified Prospectus for the annual management fee rate for each class of units. For Class O units, the management fee is negotiated with and paid by, or as directed by, unitholders or dealers and discretionary managers on behalf of unitholders. Such Class O management fee will not exceed the Class A unit management fee rate.

The following table shows a breakdown of the services received in consideration of the management fees, as a percentage of the management fees collected from the Fund for the period ended December 31, 2019. These amounts do not include waived fees or absorbed expenses.

	Class A Units	Premium Class Units	Institutional Class Units
Sales and trailing commissions paid to dealers	23.52%	30.95%	0.00%
General administration, investment advice, and profit	76.48%	69.05%	100.00%

Past Performance

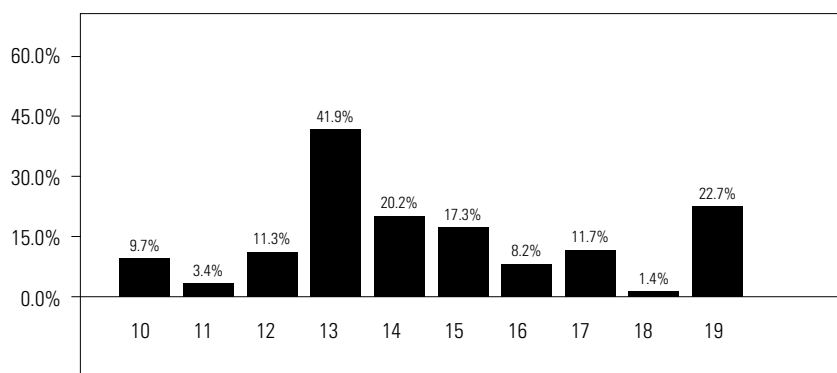
The performance data provided assumes reinvestment of distributions only and does not take into account sales, redemption, distribution, or other optional charges payable by any unitholder that would have reduced returns. Past performance does not necessarily indicate how a fund will perform in the future.

The Fund's returns are after the deduction of fees and expenses, and the difference in returns between classes of units is primarily due to differences in the management expense ratio. See *Financial Highlights* section for the management expense ratio.

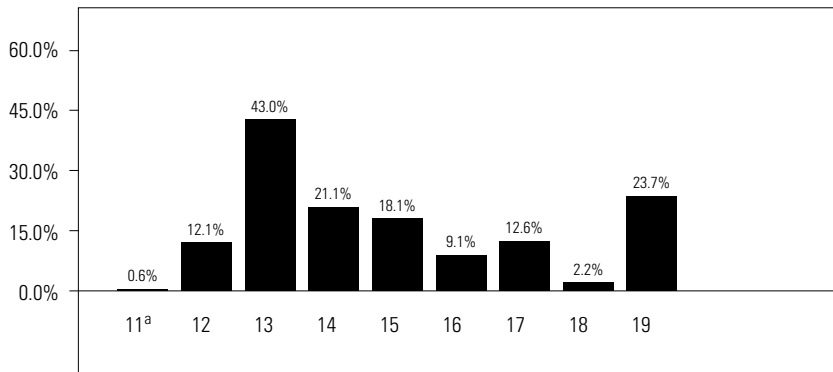
Year-by-Year Returns

These bar charts show the annual performance of each class of units of the Fund for each of the periods shown, and illustrate how the performance has changed from period to period. These bar charts show, in percentage terms, how an investment made on January 1 would have increased or decreased by December 31, unless otherwise indicated.

Class A Units

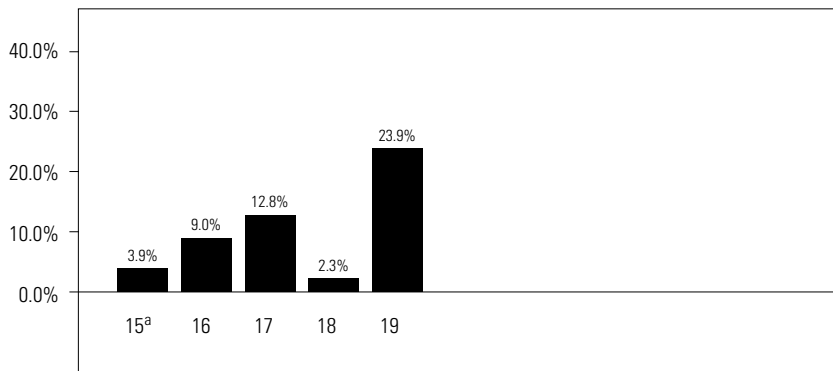


Premium Class Units



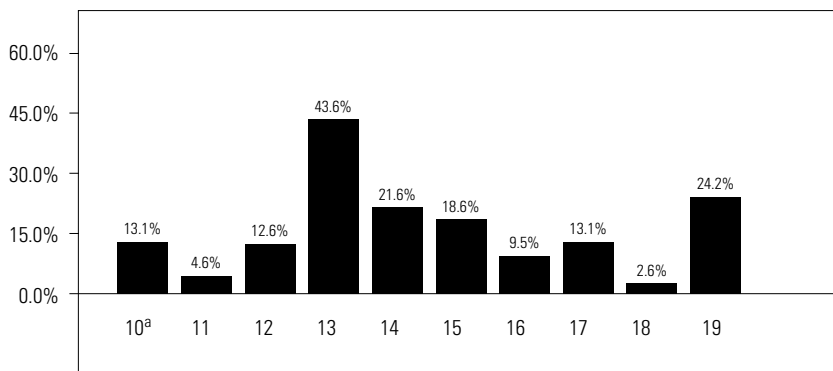
^a 2011 return is for the period from November 30, 2011 to December 31, 2011.

Institutional Class Units



^a 2015 return is for the period from October 30, 2015 to December 31, 2015.

Class O Units



^a 2010 return is for the period from June 1, 2010 to December 31, 2010.

Annual Compound Returns

This table shows the annual compound return of each class of units of the Fund for each indicated period ended on December 31, 2019. The annual compound total return is also compared to the Fund's benchmarks.

The Fund's benchmark is the Wilshire 5000 Total Market Index.

CIBC U.S. Broad Market Index Fund

	<i>1 Year</i>	<i>3 Years</i>	<i>5 Years</i>	<i>10 Years*</i>	<i>or</i>	<i>Since Inception*</i>	<i>Inception Date</i>
Class A units	22.7%	11.6%	12.0%	14.3%			May 6, 1991
Wilshire 5000 Total Market Index	23.6%	12.3%	13.1%	15.4%			
Premium Class units	23.7%	12.5%	12.9%			17.1%	November 30, 2011
Wilshire 5000 Total Market Index	23.6%	12.3%	13.1%			17.5%	
Institutional Class units	23.9%	12.7%				12.2%	October 30, 2015
Wilshire 5000 Total Market Index	23.6%	12.3%				12.2%	
Class O units	24.2%	12.9%	13.3%			16.6%	June 1, 2010
Wilshire 5000 Total Market Index	23.6%	12.3%	13.1%			16.1%	

* If a class of units has been outstanding for less than 10 years, the annual compound return since inception is shown.

Wilshire 5000 Total Market Index is intended to represent the broad U.S. equity market. It is a market value-weighted index of more than 5,000 U.S. securities.

A discussion of the Fund's relative performance compared to its benchmarks can be found in *Results of Operations*.

Summary of Investment Portfolio (as at December 31, 2019)

The summary of investment portfolio may change due to ongoing portfolio transactions of the investment fund. A quarterly update is available by visiting www.cibc.com/mutualfunds. The Top Positions table shows a fund's 25 largest positions. For funds with fewer than 25 positions in total, all positions are shown. Cash and cash equivalents are shown in total as one position.

<i>Portfolio Breakdown</i>	<i>% of Net Asset Value</i>
Information Technology	21.8
Financials	13.6
Health Care	12.9
Consumer Discretionary	10.2
Communication Services	10.0
Industrials	9.6
Consumer Staples	7.2
Other Equities	6.1
Energy	4.6
Real Estate	3.8
Cash & Cash Equivalents	0.1
Other Assets, less Liabilities	0.1

<i>Top Positions</i>	<i>% of Net Asset Value</i>
Apple Inc.	3.9
Microsoft Corp.	3.5
Alphabet Inc., Class 'C'	2.7
Amazon.com Inc.	2.7
Facebook Inc., Class 'A'	1.7
Berkshire Hathaway Inc., Class 'B'	1.6
JPMorgan Chase & Co.	1.3
Johnson & Johnson	1.1
Visa Inc., Class 'A'	1.1
Walmart Inc.	1.0
Bank of America Corp.	1.0
Procter & Gamble Co. (The)	0.9
MasterCard Inc., Class 'A'	0.9
Exxon Mobil Corp.	0.9
AT&T Inc.	0.8
UnitedHealth Group Inc.	0.8
Intel Corp.	0.8
Walt Disney Co. (The)	0.8
Verizon Communications Inc.	0.7
Home Depot Inc. (The)	0.7
Wells Fargo & Co.	0.7
Coca-Cola Co. (The)	0.7
Merck & Co. Inc.	0.7
Chevron Corp.	0.7
Pfizer Inc.	0.6

"Wilshire®" and "Wilshire 5000 Total Market IndexSM" are service marks of Wilshire Associates Incorporated ("Wilshire") and have been licensed for use by CIBC. All content of the Wilshire 5000 Total Market IndexSM is © 2010 Wilshire Associates Incorporated, all rights reserved. The Fund is not sponsored, endorsed, sold, or promoted by Wilshire, and Wilshire makes no representations or warranties with respect to the Fund.

A note on forward-looking statements

The management report of fund performance may contain forward-looking statements. Forward-looking statements include statements that are predictive in nature, that depend upon or refer to future events or conditions, or that include words such as "expects", "anticipates", "intends", "plans", "believes", "estimates", or other similar wording. In addition, any statements that may be made concerning future performance, strategies, or prospects and possible future actions taken by the fund, are also forward-looking statements. Forward-looking statements are not guarantees of future performance. These statements involve known and unknown risks, uncertainties, and other factors that may cause the actual results and achievements of the fund to differ materially from those expressed or implied by such statements. Such factors include, but are not limited to: general economic, market, and business conditions; fluctuations in securities prices, interest rates, and foreign currency exchange rates; changes in government regulations; and catastrophic events.

The above list of important factors that may affect future results is not exhaustive. Before making any investment decisions, we encourage you to consider these and other factors carefully. CIBC does not undertake, and specifically disclaims, any obligation to update or revise any forward-looking statements, whether as a result of new information, future developments, or otherwise prior to the release of the next management report of fund performance.

**CIBC Mutual Funds
CIBC Family of Portfolios**

CIBC

18 York Street, Suite 1300
Toronto, Ontario
M5J 2T8

CIBC Securities Inc.
1-800-465-3863

Website
www.cibc.com/mutualfunds



CIBC Securities Inc. is a wholly-owned subsidiary of CIBC and is the principal distributor of the CIBC Mutual Funds and the CIBC Family of Portfolios. CIBC Family of Portfolios are mutual funds that primarily invest in other CIBC Mutual Funds. To obtain a copy of the simplified prospectus, call CIBC Securities Inc. at 1-800-465-3863 or ask your advisor.